

SHANGHAI NEWTREND ELECTRIC CO., LTD.

DISTRIBUTION BOX





TXM Series

Distribution Box(Iron Base)

配电箱 (铁座)

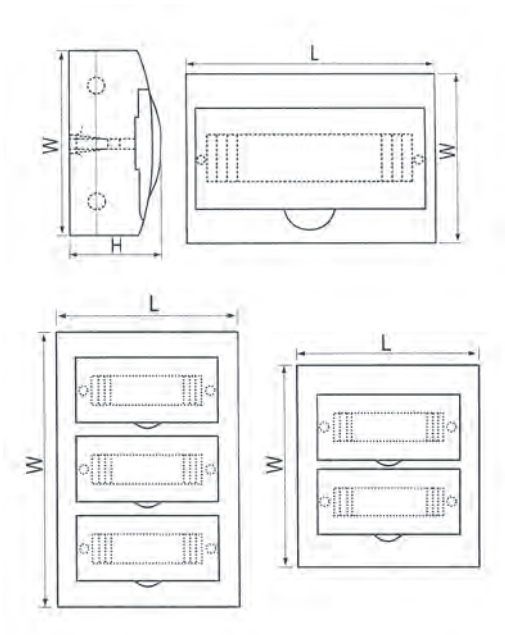
>>> www.sntelec.com



General 概述

Overall panel design is luxury and attractive, the face covering colors are dark green and brown (provided according to the color needs of the different interior residential designs except for the standard colors). The design of the face covering gives a noble and elegant feeling. Pure Ivory, high strength, never change color, transparent material is PC. Fixed frame, simple structure, and easy installation.

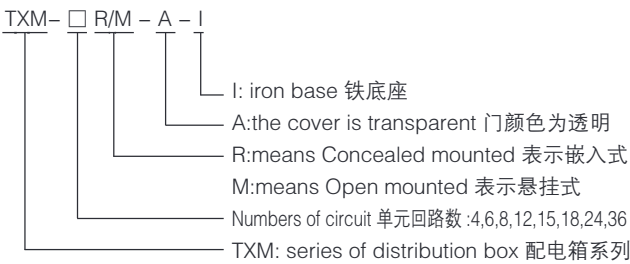
整个面板设计豪华美观，面盖颜色分别为墨绿色和茶色（除标准颜色外，可按不同室内家居设计的颜色需要而提供）。面盖弧线型的设计更是给人一种高贵典雅的感觉。纯象牙色，强度高，永不变色，透明材料为pc。固定的机架，结构简单，便于安装。



Parameters 参数

- ※ Rated current: 63 (A)
- ※ Short-circuit making current: 10 (KA)
- ※ Shell protection grade: IP30;
- ※ Shell material: ABS polymeric carbon
- ※ Color: White
- ※ Face covering: Transparent
- ※ 额定电流：63(A)
- ※ 短路关合电流：10(KA)
- ※ 壳体防护等级：IP30
- ※ 外壳材质：ABS 聚碳
- ※ 颜色：白色
- ※ 面盖：透明

Model Description 型号说明



Concealed mounted 暗装

| Model 型号 | Secret Installation 暗装 | Dimensions 尺寸 | | |
|-------------|------------------------------|---------------|----------|----------|
| | | L 长 (mm) | W 宽 (mm) | H 高 (mm) |
| TXM-4RAI | 1 BLOCK | 136 | 222 | 100 |
| TXM-6RAI | 1 BLOCK | 170 | 222 | 100 |
| TXM-8RAI | 1 BLOCK | 205 | 222 | 100 |
| TXM-12RAI | 1 BLOCK | 280 | 222 | 100 |
| TXM-15RAI | 1 BLOCK | 334 | 222 | 100 |
| TXM-18RAI | 1 BLOCK | 400 | 255 | 100 |
| TXM-24RAI | 2 BLOCK | 300 | 355 | 100 |
| TXM-36RAI | 2 BLOCK | 481 | 300 | 100 |

Open mounted 明装

| Model 型号 | Secret Installation 明装 | Dimensions 尺寸 | | |
|-------------|------------------------------|---------------|----------|----------|
| | | L 长 (mm) | W 宽 (mm) | H 高 (mm) |
| TXM-4MAI | 1 BLOCK | 136 | 222 | 110 |
| TXM-6MAI | 1 BLOCK | 170 | 222 | 110 |
| TXM-8MAI | 1 BLOCK | 205 | 222 | 110 |
| TXM-12MAI | 1 BLOCK | 285 | 222 | 110 |
| TXM-15MAI | 1 BLOCK | 334 | 222 | 110 |
| TXM-18MAI | 1 BLOCK | 400 | 255 | 110 |
| TXM-24MAI | 2 BLOCK | 300 | 355 | 110 |
| TXM-36MAI | 2 BLOCK | 481 | 300 | 110 |



TXM Series

Distribution Box(Plastic Base)

配电箱 (塑料座)

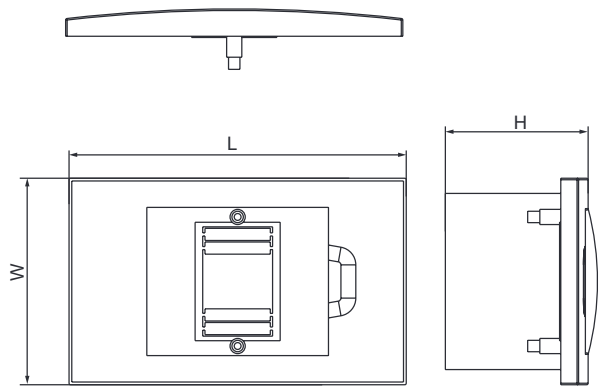
>>> www.sntelec.com



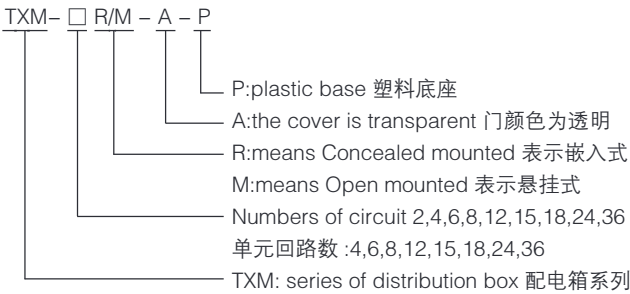
General 概述

Overall panel design is luxury and attractive, the face covering colors are dark green and brown (provided according to the color needs of the different interior residential designs except for the standard colors). The design of the face covering gives a noble and elegant feeling. Pure Ivory, high strength, never change color, transparent material is PC. Fixed frame, simple structure, and easy installation.

整个面板设计豪华美观，面盖颜色分别为墨绿色和茶色（除标准颜色外，可按不同室内家居设计的颜色需要而提供）。面盖弧线型的设计更是给人一种高贵典雅的感觉。纯象牙色，强度高，永不变色，透明材料为pc。固定的机架，结构简单，便于安装。



Model Description 型号说明



Concealed mounted 暗装

| Model 型号 | Dimensions 尺寸 | | |
|-------------|---------------|----------|----------|
| | L 长 (mm) | W 宽 (mm) | H 高 (mm) |
| TXM-2RAP | 94 | 146 | 85 |
| TXM-4RAP | 135 | 222 | 85 |
| TXM-6RAP | 171 | 222 | 85 |
| TXM-8RAP | 207 | 222 | 85 |
| TXM-10RAP | 244 | 222 | 85 |
| TXM-12RAP | 280 | 222 | 85 |
| TXM-15RAP | 334 | 222 | 85 |
| TXM-18RAP | 399 | 251 | 92 |
| TXM-24RAP | 300 | 344 | 98 |
| TXM-36RAP | 300 | 481 | 98 |

Open mounted 明装

| Model 型号 | Dimensions 尺寸 | | |
|-------------|---------------|----------|----------|
| | L 长 (mm) | W 宽 (mm) | H 高 (mm) |
| TXM-2MAP | 94 | 146 | 85 |
| TXM-4MAP | 112 | 200 | 94 |
| TXM-6MAP | 146 | 200 | 94 |
| TXM-8MAP | 184 | 200 | 94 |
| TXM-10MAP | 222 | 200 | 94 |
| TXM-12MAP | 256 | 200 | 94 |
| TXM-15MAP | 312 | 200 | 94 |
| TXM-18MAP | 363 | 220 | 94 |
| TXM-24MAP | 270 | 325 | 94 |
| TXM-36MAP | 270 | 458 | 94 |



SN Series

Distribution Box

配电箱

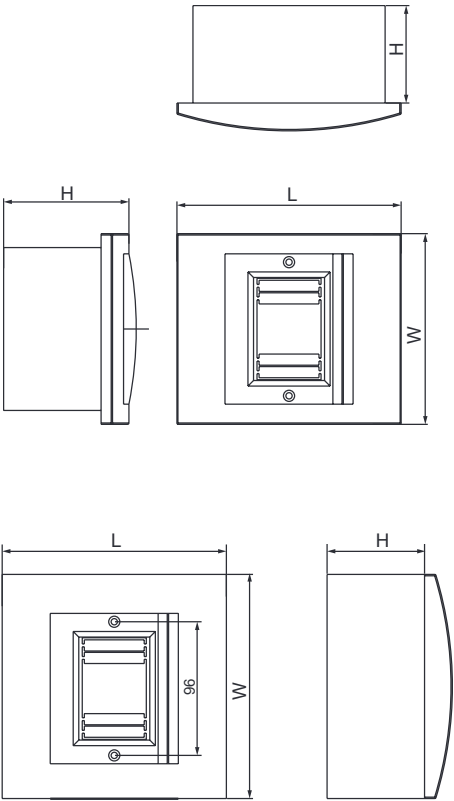
>>> www.sntelec.com



General 概述

SN series of luxury lighting box is divided into two kinds, concealed mounted type and open mounted type. It is with plastic panel and iron bottom. Two terminals (ground connection and zero connection) in the box are easy for the user wiring and routing. This product is applicable to the modular terminal circuit with AC of 50HZ, rated voltages of 220V and 380V.

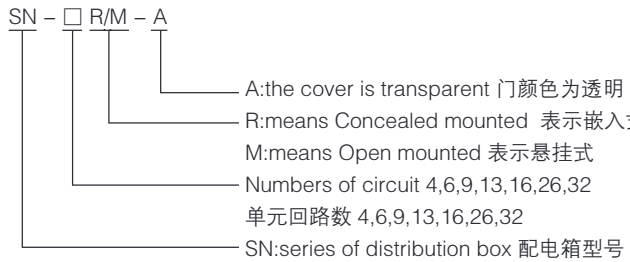
豪华型照明箱分暗装和明装两种。采用塑料面板和铁底。箱内接零接地两条端子便于用户接线和走线。适用于交流 50HZ，额定电压 220V、380V 的模数化终端电路中。



Features 特点

- ※ Design of super-large and clear luminous bars,soft and elegant outline.
- ※ Humanized circuitry symbols, printed display of control circuit breaker, clear and elegant.
- ※ The guide-rail shoe plate has round hole, it is able to regulate the cover of distribution box to level position.
- ※ 超大清晰夜光条设计，产品外观线条柔和、时尚、优美。
- ※ 人性化线路标识，印制显示断路器控制回路，清晰美观。
- ※ 导轨支撑板设有圆孔，可将配电箱面该调至水平位置。

Model Description 型号说明



Concealed mounted 暗装

| Model 型号 | Dimensions 尺寸 | | |
|-------------|---------------|----------|----------|
| | L 长 (mm) | W 宽 (mm) | H 高 (mm) |
| SN-2-4RA | 137 | 161 | 82 |
| SN-4-6RA | 208 | 208 | 95 |
| SN-7-9RA | 261 | 208 | 95 |
| SN-10-13RA | 334 | 208 | 95 |
| SN-14-16RA | 390 | 208 | 95 |
| SN-20-26RA | 334 | 416 | 95 |
| SN-28-32RA | 390 | 416 | 95 |

Open mounted 明装

| Model 型号 | Dimensions 尺寸 | | |
|-------------|---------------|----------|----------|
| | L 长 (mm) | W 宽 (mm) | H 高 (mm) |
| SN-2-4MA | 137 | 161 | 82 |
| SN-4-6MA | 208 | 208 | 95 |
| SN-7-9MA | 261 | 208 | 95 |
| SN-10-13MA | 334 | 208 | 95 |
| SN-14-16MA | 390 | 208 | 95 |
| SN-20-26MA | 334 | 416 | 95 |
| SN-28-32MA | 390 | 416 | 95 |



SH Series

Distribution Box

配电箱

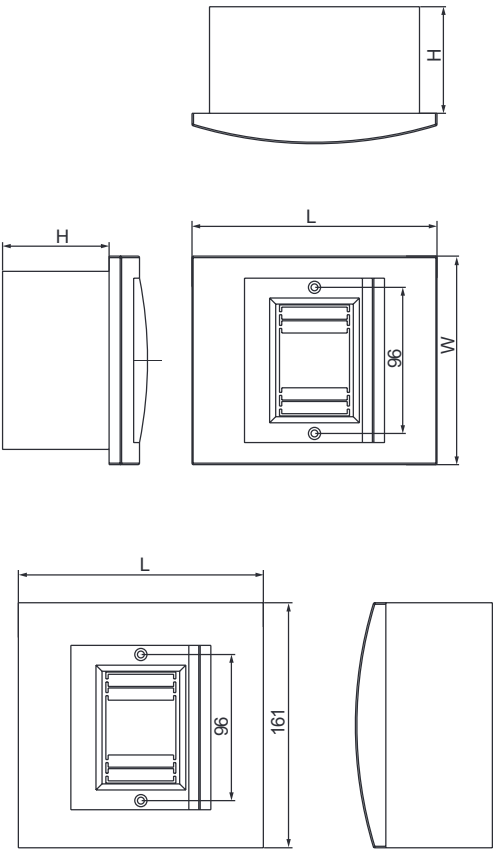
>>> www.sntelec.com



General 概述

SH series of luxury lighting box is divided into two kinds, Concealed mounted type and Open mounted type. It is with plastic panel and iron bottom. Two terminals (ground connection and zero connection) in the box are easy for the user wiring and routing. This product is applicable to the modular terminal circuit with AC of 50HZ, rated voltages of 220V and 380V.

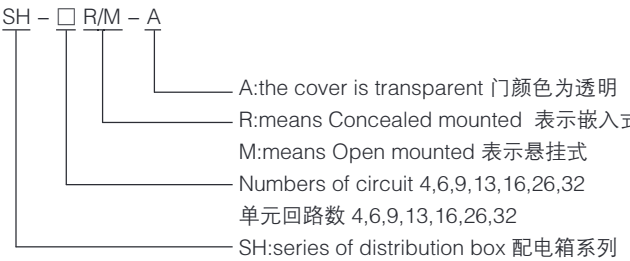
豪华型照明箱分暗装和明装两种。采用塑料面板和铁底。箱内接零接地两条端子便于用户接线和走线。适用于交流 50HZ，额定电压 220V、380V 的模数化终端电路中。



Features 特点

- ※ Humanized circuitry symbols,printed display of control circuit breaker, clear and elegant.
- ※ The guide-rail shoe plate has round hole, it is able to regulate the cover of distribution box to level position.
- ※ The distribution box is able to regulate the height automatically within a certain range from the outer wall.
- ※ 人性化线路标识，印制显示断路器控制回路，清晰美观。
- ※ 导轨支撑板设有圆孔，可将配电箱面该调至水平位置。
- ※ 配电箱可在安装深度距离外墙一定范围之内自行调和高度。

Model Description 型号说明



Concealed mounted 暗装

| Model 型号 | Dimensions 尺寸 | | |
|-------------|---------------|----------|----------|
| | L 长 (mm) | W 宽 (mm) | H 高 (mm) |
| SH-2-4RA | 137 | 161 | 82 |
| SH-4-6RA | 208 | 208 | 95 |
| SH-7-9RA | 261 | 208 | 95 |
| SH-10-13RA | 334 | 208 | 95 |
| SH-14-16RA | 390 | 208 | 95 |
| SH-20-26RA | 334 | 416 | 95 |
| SH-28-32RA | 390 | 416 | 95 |

Open mounted 明装

| Model 型号 | Dimensions 尺寸 | | |
|-------------|---------------|----------|----------|
| | L 长 (mm) | W 宽 (mm) | H 高 (mm) |
| SH-2-4MA | 137 | 161 | 82 |
| SH-4-6MA | 208 | 208 | 95 |
| SH-7-9MA | 261 | 208 | 95 |
| SH-10-13MA | 334 | 208 | 95 |
| SH-14-16MA | 390 | 208 | 95 |
| SH-20-26MA | 334 | 416 | 95 |
| SH-28-32MA | 390 | 416 | 95 |

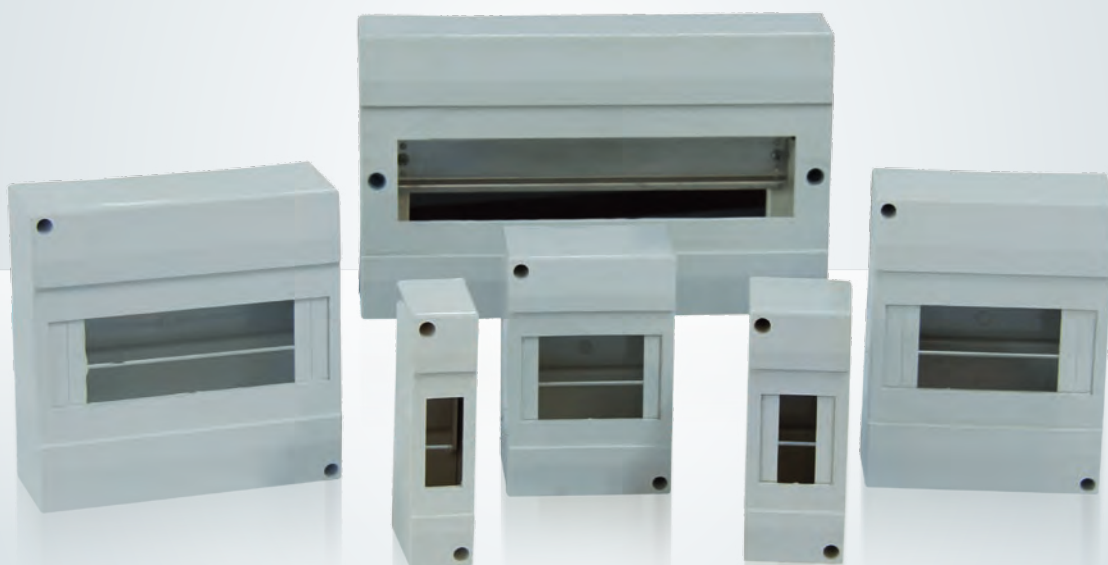


HAG II Series

Distribution Box

配电箱

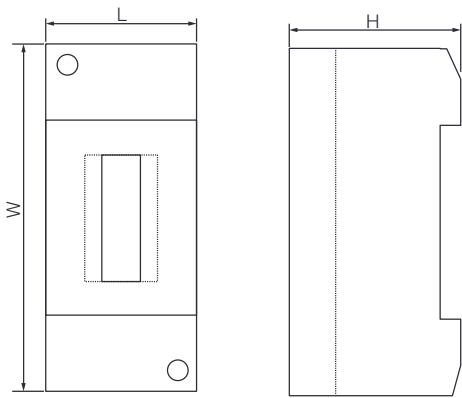
>>> www.sntelec.com



General 概述

HAG II series of surface box is kind of good-looking outline small volume.easy to install economically modular distribution box. It mainly use for building electric distribution system's installation,matched and house rebuild fitment etc application The Max rated current is 63A。

海格明装系列是一种外观优美，体积轻巧，便于安装的经济型配电箱。主要用于建筑配电系统的安装，房屋建造的设备安装等。最大额定电流为 63A。



| Model 型号 | Dimensions 尺寸 | | |
|-------------|---------------|----------|----------|
| | L 长 (mm) | W 宽 (mm) | H 高 (mm) |
| HAG II -1P | 34 | 130 | 60 |
| HAG II -2P | 52 | 130 | 60 |
| HAG II -4P | 87 | 130 | 60 |
| HAG II -6P | 125 | 160 | 60 |
| HAG II -8P | 160 | 160 | 60 |
| HAG II -12P | 258 | 160 | 60 |
| HAG II -18P | 365 | 160 | 60 |

Parameters 参数

- ※ Technique parameter
Distribution box rated current:
1 way to 4 way:50A
6 way to 18 way:63A
- ※ Material
Insutation:Fire-proof type refractory material
Color:White color
Standard:accord with IEC 060439-3
- ※ Protective Degree
IEC60529:IP30
Fire-resistant andanomaly heat abiliy
IEC60529-1 standard,650C/30sec
- ※ Composition,structure.
Removable matte blocks to increase the poles.
The removable various size holes are available on the box of up and down,bottom in case of connecting wires in and out.
- ※ 技术参数
配电箱额定电流：
1 回路到 4 回路：50A
6 回路到 18 回路：63A
- ※ 材料
绝缘：阻燃耐熔材料
颜色：白色
标准：符合 IEC 标准
- ※ 保护等级
IEC60529:IP30
阻燃且耐高温
标准：IEC60529-2-1
- ※ 结构
可移动式模块，可增加回路数。
在箱体的上下及侧面有可移动的，各种尺寸的安装孔，以便于线路进出。



TSPS-ABB Series

Distribution Box

配电箱

>>> www.sntelec.com



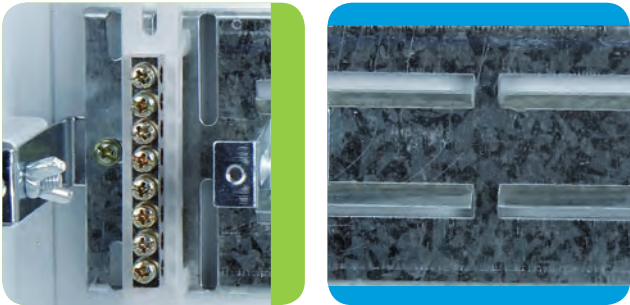
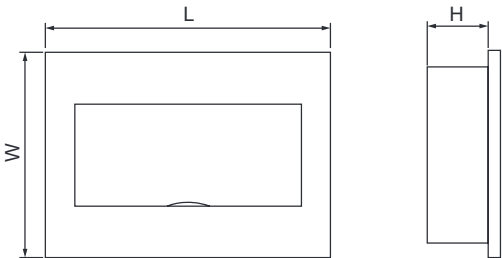
General 概述

The TSPS-ABB series distribution box are made up of transparent cover, metal box, mounting rails, wire, wiring terminal and electrical components. There are two kinds of box: flush mounting and surface mounting.

There are three combinations of The TSPS-ABB series distribution box, sigle layer, double layers and three layers. If one unit is 18mm, one layer can be installed 20 units, and double layers can be installed 40 units, three layers can be installed 60 units.

TSPS-ABB 系列配电箱有透明罩、上盖、箱体、安装导轨、导线、接线端子和电器元件等构成，箱体用钢板制成既可嵌入安装又可悬挂安装。

TSPS-ABB 系列配电箱组合可多种开式，分为单层、双层、三层最大安装容量以元件宽度 18mm 为 1 个单元，可装 60 个单元 (7、10、12、16、20、24、32、40、60)；单层最大安装容量 为 20 个单元，双层最大安装容量为 40 个单元，三层最大安装容量为 60 个单元。



| Model 型号 | Dimensions 尺寸 | | |
|-------------|---------------|----------|----------|
| | L 长 (mm) | W 宽 (mm) | H 高 (mm) |
| TSPS-ABB-7 | 270 | 222 | 90 |
| TSPS-ABB-10 | 324 | 222 | 90 |
| TSPS-ABB-12 | 360 | 222 | 90 |
| TSPS-ABB-16 | 432 | 222 | 90 |
| TSPS-ABB-20 | 504 | 222 | 90 |
| TSPS-ABB-24 | 360 | 454 | 90 |
| TSPS-ABB-32 | 432 | 454 | 90 |
| TSPS-ABB-40 | 504 | 454 | 90 |
| TSPS-ABB-48 | 432 | 674 | 90 |
| TSPS-ABB-60 | 504 | 674 | 90 |

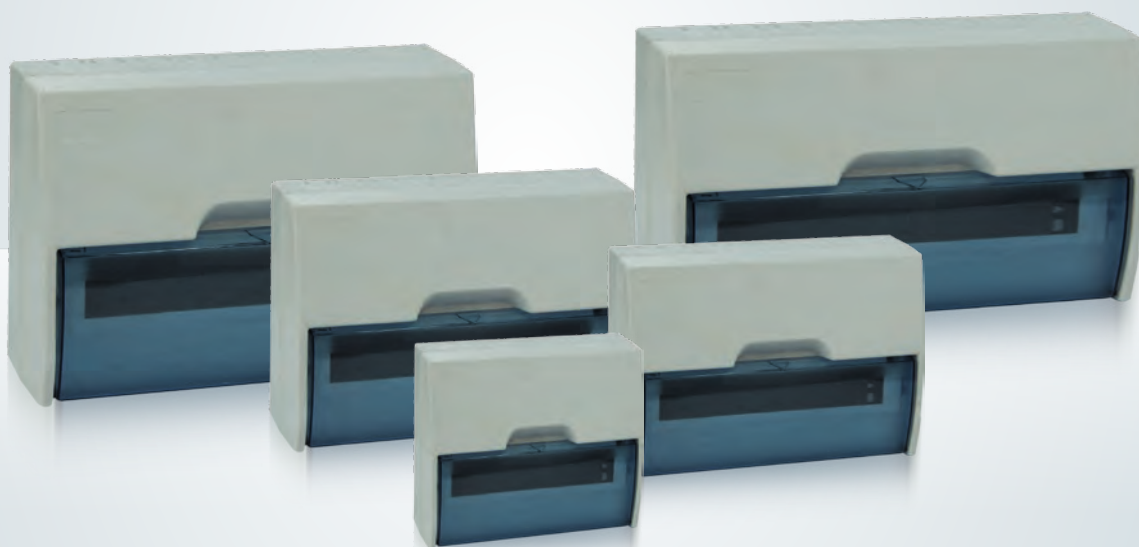




英式配电箱

UK Type Distribution Box

>>> www.sntelec.com



性能特性 Features

- ※ With standard of BSEN60439-3
- ※ 960’ UV stop ABS on body and V0 retardant PC on transparent lids.
- ※ Neutral & Earth terminal link bars assembled
- ※ Preformed cables or Flexible wires connected on correct terminals
- ※ Live busbar assembled for necessary MCBs fitting
- ※ With quarter turn plastic screws easy to open and close the front cover
- ※ IP40 standard suit to indoor use only

- ※ 符合 BSEN60439-3 标准
- ※ 壳体材料为 960’ 抗紫外线 ABS，盖板材料为 V0 等级阻燃 PC
- ※ 配置铜条和导轨
- ※ 电线或软铜线连接到接线端子
- ※ 配置汇流排用于安装小型断路器
- ※ 使用塑料直角转弯螺丝固定配电箱
- ※ 防水等级 IP40，适用于室内安装



| 名称 Name | 规格 Specification |
|---------------------|---------------------|
| 照明箱 Lighting box | 4WAY |
| | 6WAY |
| | 8WAY |
| | 10WAY |
| | 14WAY |
| | 18WAY |
| | 21WAY |
| | 24WAY |





SH-Q3 Series

Water-Proof Junction Box

防水接线盒

>>> www.sntelec.com



General 概述

It is made of materials such as ABS and PC, etc, elegant external shape, high firmness. Combined body and cover are fixed with four plastic screws that are difficult to fall off. Its specification and size can be designed based on the customer requirements. Economic and affordable. Net weight only accounts for the iron box of about 1/4, to facilitate handling and operation, no corrosion, good insulation.

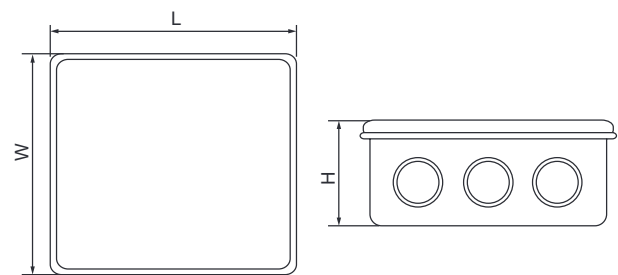
Waterproof junction box purpose: electrical, electronics, communication, fire fighting equipment, control panel, terminal box, large factory, coastal plant, environmental hazard facility, etc.

Materials can be selected according to the customer's requirements.

采用用 ABS、PC 等材料制成，外形美观大方，具有很高的坚固性。合体与盖采用四个不易脱落的塑料螺丝固定。其规格大小可以随客户要求而设计。即经济又实惠。净重只占铁制盒子的 1/4 左右，便于搬运和操作，无腐蚀性，绝缘性佳。

防水接线盒的用途：电气、电子、通信、消防设备、控制板、端子箱、大型工厂、沿海工厂、环境公害设施等。

可以按客户的要求来选择材料。



| Model 型号 | Dimensions 尺寸 | | |
|-------------|---------------|----------|----------|
| | L 长 (mm) | W 宽 (mm) | H 高 (mm) |
| SH-Q3-801 | 50 | | 30 |
| SH-Q3-802 | 50 | | 50 |
| SH-Q3-803 | 80 | | 50 |
| SH-Q3-804 | 80 | 80 | 50 |
| SH-Q3-805 | 85 | 85 | 50 |
| SH-Q3-806 | 100 | 100 | 70 |
| SH-Q3-807 | 150 | 110 | 70 |
| SH-Q3-808 | 150 | 150 | 70 |
| SH-Q3-809 | 200 | 100 | 110 |
| SH-Q3-8010 | 200 | 155 | 80 |
| SH-Q3-8011 | 200 | 100 | 70 |
| SH-Q3-8012 | 200 | 200 | 80 |
| SH-Q3-8013 | 255 | 200 | 80 |
| SH-Q3-8014 | 300 | 250 | 120 |
| SH-Q3-8015 | 400 | 350 | 120 |





JK Series

Junction Box

接线盒

>>> www.sntelec.com



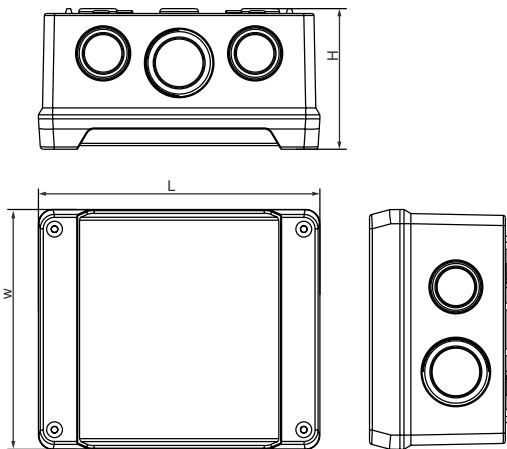
General 概述

JK Series Junction boxes are made in puncture-resistance high-strength engineering plastics, which has features of waterproof, dampproof, dustproof and anti-corrosion. This superior engineering material meets the high requirements of industrial distributing system, such as all insulation, IP rating as high as IP65, anti-corrosion, high mechanical strength, well designed, easily installation, anti-heat, maintenance free, flame retardant, self-extinction, light weight and etc. The long-term economic benefit is higher than normal metal distribution boxes. So it's high quality with reasonable prices. The main products are as following:

1. JK Junction Box (used for sectional area $1.5\text{mm}^2\text{--}240\text{mm}^2$ of conductors, IP65/IP54);
2. Mi Combined Type Distribution Unit (IP65, rating current up to 1000A);

JK 接线盒产品，广泛采用耐撞击高强度工程塑料而使其产品具有防水防潮、防尘及耐腐蚀的特点。这种优质的高级工程材料以理想的方式达到了建筑及工业配电系统所提出的较高要求：全绝缘、高达 IP65 防护等级、耐腐蚀、机械强度高、设计与装配简单、耐热、免维护、难燃、自熄、重量轻等。其长远经济效益远高于普通的金属外壳配电装置。也就是说综合指标它还是物美价廉的。主要产品有：

1. JK 分线盒 (适用导线截面积 $1.5\text{mm}^2\text{--}240\text{mm}^2$, IP65/IP54);
2. Mi 组合式配电装置 (IP65, 额定工作电流至 1000A);



| Model 型号 | Dimensions 尺寸 L 长 × W 宽 × H 高 (mm) |
|---|--|
| 9025 (包括 4 个 ESM20 管接头) 9025 (including 4 ESM20 pipe coupling) | 88 × 88 × 53 |
| 9125 (包括 4 个 ESM20 管接头) 9125 (including 4 ESM20 pipe coupling) | 88 × 88 × 53 |
| 9045 (包括 4 个 ESM20 管接头) 9045 (including 4 ESM20 pipe coupling) | 98 × 98 × 61 |
| 9065 (包括 4 个 ESM20 管接头) 9065 (including 4 ESM20 pipe coupling) | 119 × 139 × 70 |
| 9105 (包括 4 个 ESM20 管接头) 9105 (including 4 ESM20 pipe coupling) | 125 × 167 × 82 |
| 9255 (包括 4 个 ESM20 管接头) 9255 (including 4 ESM20 pipe coupling) | 160 × 200 × 98 |
| 9355 (包括 4 个 ESM20 管接头) 9355 (including 4 ESM20 pipe coupling) | 210 × 260 × 117 |
| 9505 (包括 4 个 ESM20 管接头) 9505 (including 4 ESM20 pipe coupling) | 310 × 210 × 117 |





SELHOT Series

Water-Proof Lighting Box

防水照明箱

>>> www.sntelec.com



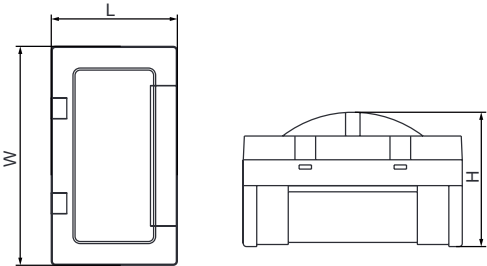
General 概述

It's waterproof, dustproof, acidproof, alkaliproof, impact resistance, anti-explosion, anti-ultraviolet, insulation and non-conducting. Widely used at these severe environment like outdoor docks, ports, outdoor distribution system, communication, mechanical equipment, chemical industry, oil and etc. The standard color is RAL 7035, and the rating of the sealing box is IP65, both ABS and PC material are available. If made by ABS, the sealing box can only be made into smooth surface without preliminary punching holes, suitable for indoors, it has good resistibility to certain chemical substances such as strong cleaner in the chemical plant. PC material is fiber glassed reinforced, the box body is strengthened, suitable for severe condition and outdoor application, temperature is from -50℃ to +120℃, with good anti-UV performance. The color of the lid is grey or transparent, and the material of lid is PC.

防水、防尘、耐酸、耐碱、抗冲击、防爆、抗紫外线辐射、绝缘不导电等优良特性,被广泛应用于户外码头、港口、野外配电工程、通信、机械设备、化工、石油等恶劣的环境下。气密封箱的防护等级为 IP65, 材料有 ABS 工程材料和聚碳酸酯材料。密封箱, 标准颜色为 RAL 7035, 材料有 ABS 工程塑料和聚碳酸酯 (PC) 两种。密封箱的防水防尘范围是在 IP65 到 IP66。ABS 制造的密封箱只可能做成光面无预冲孔, 适用于室内, 它对一些化学物质有较好的抵抗力, 例如, 在酪农工厂的强清洁剂情况下; 聚碳酸酯加入了玻璃纤维强化, 增加了密封箱箱壁的强度, 适合在严苛的条件和室外应用, 温度适用范围从 -50℃到 +120℃, 有较 强的 UV 抗辐射力; 、密封箱盖子是灰色或者透明的。透明盖子均为聚碳酸酯。



| Model 型号 | Dimensions 尺寸 | | |
|-------------|---------------|----------|----------|
| | L 长 (mm) | W 宽 (mm) | H 高 (mm) |
| SELHOT-4P | 120 | 220 | 130 |
| SELHOT-8P | 192 | 220 | 130 |
| SELHOT-12P | 264 | 220 | 130 |





HT Series

Water Proof Distribution Box(IP65)

防水配电箱 (IP65)

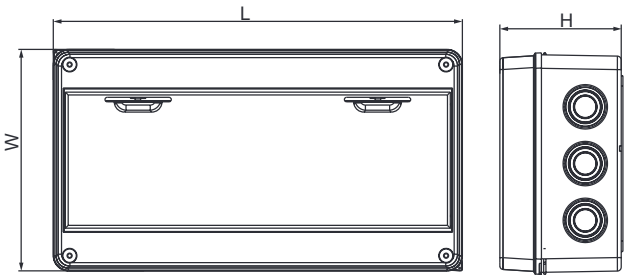
>>> www.sntelec.com



General 概述

HT Series lighting box is in line with IEC-493-1 standard, attractive and durable, safe and reliable, which is widely used in various places such as factory, mansion, residence, shopping center and so on.

HT 系列照明箱符合 IEC-493-1 标准，美观耐用，安全可靠，广泛用于工厂、大厦、住宅、商场等各类场所。



| Model 型号 | Dimensions 尺寸 | | |
|-------------|---------------|----------|----------|
| | L 长 (mm) | W 宽 (mm) | H 高 (mm) |
| HT-5P | 119 | 159 | 90 |
| HT-8P | 201 | 155 | 90 |
| HT-12P | 255 | 198 | 108 |
| HT-15P | 309 | 198 | 108 |
| HT-18P | 363 | 198 | 108 |



Features 特点

- ※ Panel is the ABS material for the engineering, high strength, never change color, the transparent material is PC.
- ※ Cover push-type opening and closing
Face covering of the distribution box adopts the push-type opening and closing mode, the face mask can be opened by pressing lightly, the self-locking positioning hinge structure is provided when opening.
- ※ Wiring design of the power distribution box
The guide rail support plate can be lifted to the highest movable point, it is no longer limited by the narrow space when installing the wire. To install easily, the switch of the distribution box is set up with the wire groove and wire pipe exit-holes, which are easy to use for a variety of wire grooves and wire pipes.
- ※ 面板为工程 ABS 材料，强度高，永不变色，透明材料为 PC。
- ※ 盖按压式开闭
配电箱面盖采用按压式开闭方式，只需轻按即可开启面罩，揭开时有自锁定位的合页结构。
- ※ 配电箱装线设计
可将导轨支撑板升到活动的最高点，安装导线时不再受狭窄空间限制，令安装容易配电箱开关设有线槽、线管出孔，易于使用各种线槽、线管。



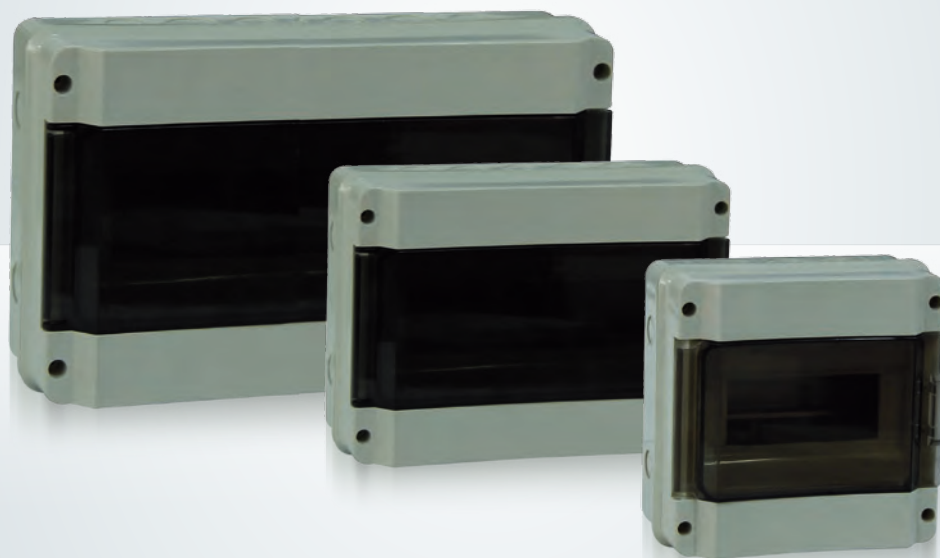


HK Series

Water Proof Distribution Box(IP65)

防水配电箱 (IP65)

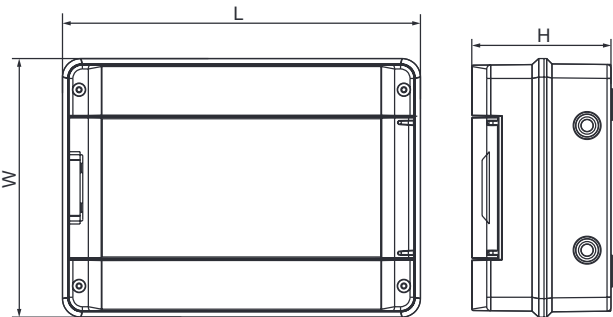
>>> www.sntelec.com



General 概述

HK Series lighting box is in line with IEC-493-1 standard, attractive and durable, safe and reliable, which is widely used in various places such as factory, mansion, residence, shopping center and so on.

HK 系列照明箱符合 IEC-493-1 标准，美观耐用，安全可靠，广泛用于工厂、大厦、住宅、商场等各类场所。



| Model 型号 | Dimensions 尺寸 | | |
|-------------|---------------|----------|----------|
| | L 长 (mm) | W 宽 (mm) | H 高 (mm) |
| HK-5P | 140 | 140 | 105 |
| HK-8P | 195 | 195 | 105 |
| HK-12P | 268 | 195 | 105 |
| HK-18P | 370 | 195 | 105 |

Features 特点

- ※ Panel is the ABS material for the engineering, high strength, never change color, the transparent material is PC.
- ※ Cover push-type opening and closing
Face covering of the distribution box adopts the push-type opening and closing mode, the face mask can be opened by pressing lightly, the self-locking positioning hinge structure is provided when opening.
- ※ Wiring design of the power distribution box
The guide rail support plate can be lifted to the highest movable point, it is no longer limited by the narrow space when installing the wire. To install easily, the switch of the distribution box is set up with the wire groove and wire pipe exit-holes, which are easy to use for a variety of wire grooves and wire pipes.
- ※ 面板为工程 ABS 材料，强度高，永不变色，透明材料为 PC。
- ※ 盖按压式开闭
配电箱面盖采用按压式开闭方式，只需轻按即可开启面罩，揭开时有自锁定位的合页结构。
- ※ 配电箱装线设计
可将导轨支撑板升到活动的最高点，安装导线时不再受狭窄空间限制，令安装容易配电箱开关设有线槽、线管出孔，易于使用各种线槽、线管。



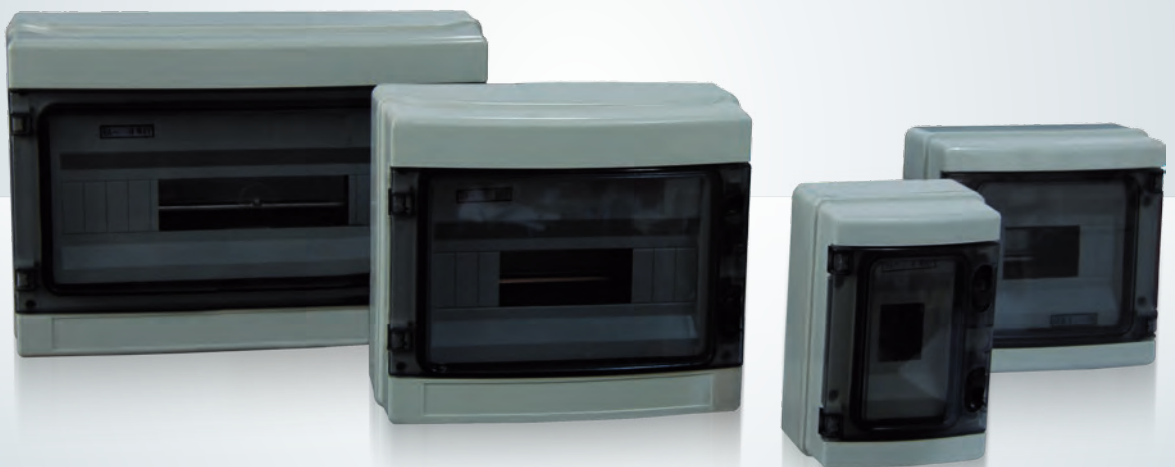


HA Series

Water Proof Distribution Box(IP65)

防水配电箱 (IP65)

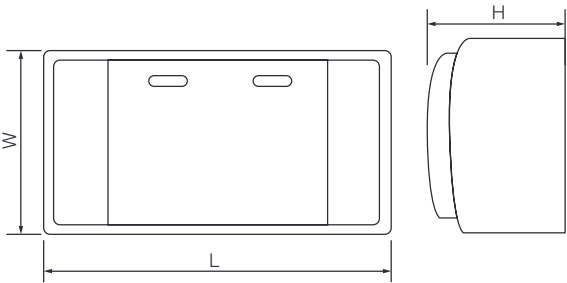
>>> www.sntelec.com



General 概述

HA Series lighting box is in line with IEC-493-1 standard, attractive and durable, safe and reliable, which is widely used in various places such as factory, mansion, residence, shopping center and so on.

HA 系列照明箱符合 IEC-493-1 标准，美观耐用，安全可靠，广泛用于工厂、大厦、住宅、商场等各类场所。



| Model 型号 | Dimensions 尺寸 | | |
|-------------|---------------|----------|----------|
| | L 长 (mm) | W 宽 (mm) | H 高 (mm) |
| HA-4P | 140 | 210 | 100 |
| HA-8P | 215 | 210 | 100 |
| HA-12P | 300 | 260 | 140 |
| HA-18P | 410 | 285 | 140 |
| HA-24P | 415 | 300 | 140 |

Features 特点

- ※ Panel is the ABS material for the engineering, high strength, never change color, the transparent material is PC.
- ※ Cover push-type opening and closing
Face covering of the distribution box adopts the push-type opening and closing mode, the face mask can be opened by pressing lightly, the self-locking positioning hinge structure is provided when opening.
- ※ Wiring design of the power distribution box
The guide rail support plate can be lifted to the highest movable point, it is no longer limited by the narrow space when installing the wire. To install easily, the switch of the distribution box is set up with the wire groove and wire pipe exit-holes, which are easy to use for a variety of wire grooves and wire pipes.
- ※ 面板为工程 ABS 材料，强度高，永不变色，透明材料为 PC。
- ※ 盖按压式开闭
配电箱面盖采用按压式开闭方式，只需轻按即可开启面罩，揭开时有自锁定位的合页结构。
- ※ 配电箱装线设计
可将导轨支撑板升到活动的最高点，安装导线时不再受狭窄空间限制，令安装容易配电箱开关设有线槽、线管出孔，易于使用各种线槽、线管。





SHFS4 Series

4 Pole IP66 Enclosure

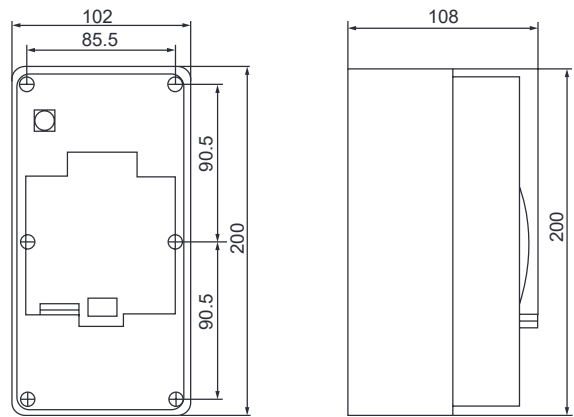
>>> www.sntelec.com



Description

It offers maximum 4 pole space to accommodate MCB, RCD or MCB/RCD combination. its cover assemblies suits all 66series mounting back box.

Deep cover of A66CB4N provides ample wiring room above and below the din rail.



Approvals

CE

Technical Parameter

- ※ Ratea Voltage:250/440V AC
- ※ Ratea Frequency:50/60Hz
- ※ IP Protection:IP66

Specification

| Cat No. | Description | Module Type | IP Rating |
|----------|---|-------------|-----------|
| SHFS4-1N | available for 1 to 4 pole, with neon lamp | MCB+RCD's | IP66 |
| SHFS4-2N | available for 1 to 4 pole, with neon lamp | MCB+RCD's | IP66 |
| SHFS4-3N | available for 1 to 4 pole, with neon lamp | MCB+RCD's | IP66 |
| SHFS4-4N | available for 1 to 4 pole, with neon lamp | MCB+RCD's | IP66 |





UKF Series

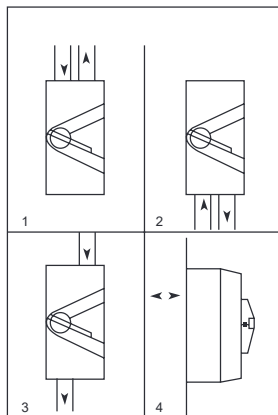
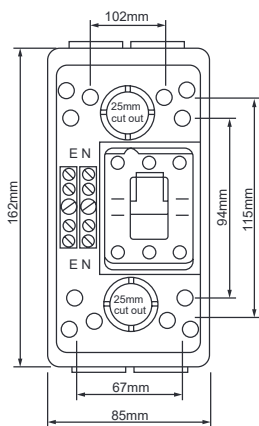
Weather Protected Switch

>>> www.sntelec.com



General

- ※ Cables looped in and out from overhead
- ※ In and out from underground
- ※ In and out straight through the switch
- ※ two 25mm rear knockouts are moulded in the base for surface mounting with concealed wiring.



Dual 25mm screwd conduit entries top and bottom (up to 55amp.) allows four ways to surface wire the switch.

Products Available

IP Rating

| | | |
|---------|--|----|
| UKF1-20 | 20A 500V Single pole surface switch. Terminals accommodate 16mm ² cable. M Rating 220 | 56 |
| UKF1-35 | 35A/63A 250V Single pole. Terminals accommodate mm ² cable. M rating 220 | 56 |
| UKF1-63 | | |

Products Available

IP Rating

| | | |
|---------|--|----|
| UKF2-20 | 20A 440V double. Trminals accommodate 16mm ² cables. M Rarting 180. | 56 |
| UKF2-35 | 35A 440V double. Trminals accommodate 16mm ² cables. M Rarting 180. | 56 |
| UKF2-63 | 63A 400V double. Trminals accommodate 16mm ² cables. M Rarting 180. | 56 |

Products Available

IP Rating

| | | |
|--------------|--|----|
| UKF3-20 | 20A 440V Tripe Pole. Trminals accommodate 16mm ² cables. M Rarting 180. | 56 |
| UKF3-35 | 35A 440V Tripe Pole. Trminals accommodate 16mm ² cables. M Rarting 180. | 56 |
| UKF3-63 | 55A 440V Tripe Pole. Trminals accommodate 16mm ² cables. M Rarting 180. | 56 |
| UKF4-20 | 20A 440V Tripe Pole. Trminals accommodate 16mm ² cables. M Rarting 180. | 56 |
| UKF4-35 | 35A 440V Tripe Pole. Trminals accommodate 16mm ² cables. M Rarting 180. | 56 |
| UKF4-63 | 55A 440V Tripe Pole. Trminals accommodate 16mm ² cables. M Rarting 180. | 56 |
| UKF3-55-32CE | 55A 440V Tripe Pole. With 32mm conduit entry at each end Trminals accommodate 16mm ² cables. M Rarting 160. | 56 |
| UKF3-63-32CE | 63A 440V Tripe Pole. With 32mm conduit entry at each end Trminals accommodate 16mm ² cables. M Rarting 160. | 56 |